



# North Carolina POTTERY CENTER

## CONTACT INFORMATION:

Visit our website for the current exhibition, events schedule, and group tour information:

PO Box 531  
Seagrove, NC 27341-0531  
336-873-8430  
Fax: 336-873-8530  
www.ncpotterycenter.com  
Email: ncpc@atomic.net

## PUBLIC HOURS:

Tuesday - Saturday 10-4  
Closed Major Holidays

## ADMISSION:

Adults	\$2
Youth 13-18	\$1
Under 12	Free
Members	Free

## OFFICE HOURS:

Monday - Friday 8:30-5

## DIRECTIONS:

### FROM CHARLOTTE (84 MILES)

Take either NC 49 or I-85 north to the intersection with US 64 (Asheboro, NC). Take US 64 east to the intersection with US 290. Take US 290 south about 11 miles, to exit 45 (Seagrove/NC 705). At the end of the exit ramp turn left and follow the brown highway signs to the center.

### FROM RALEIGH (80 MILES)

Take US 64 west to the intersection with US 290. Take US 290 south about 11 miles, to exit 45 (Seagrove/NC 705). At the end of the exit ramp turn left and follow the brown highway signs to the center.

**FROM WINSTON-SALEM, GREENSBORO (54, 37 MILES)** Take I-40 to the intersection with US 290. Take US 290 south to exit 45 (Seagrove/NC 705). At the end of the exit ramp turn left and follow the brown highway signs to the center.

### FROM SOUTHERN PINES (41 MILES)

Take NC 211 to the intersection of NC 705. Take NC 705 north 25 miles to Seagrove. Follow the brown highway signs to the center.



[www.ncpotterycenter.com](http://www.ncpotterycenter.com)

Printing provided by:

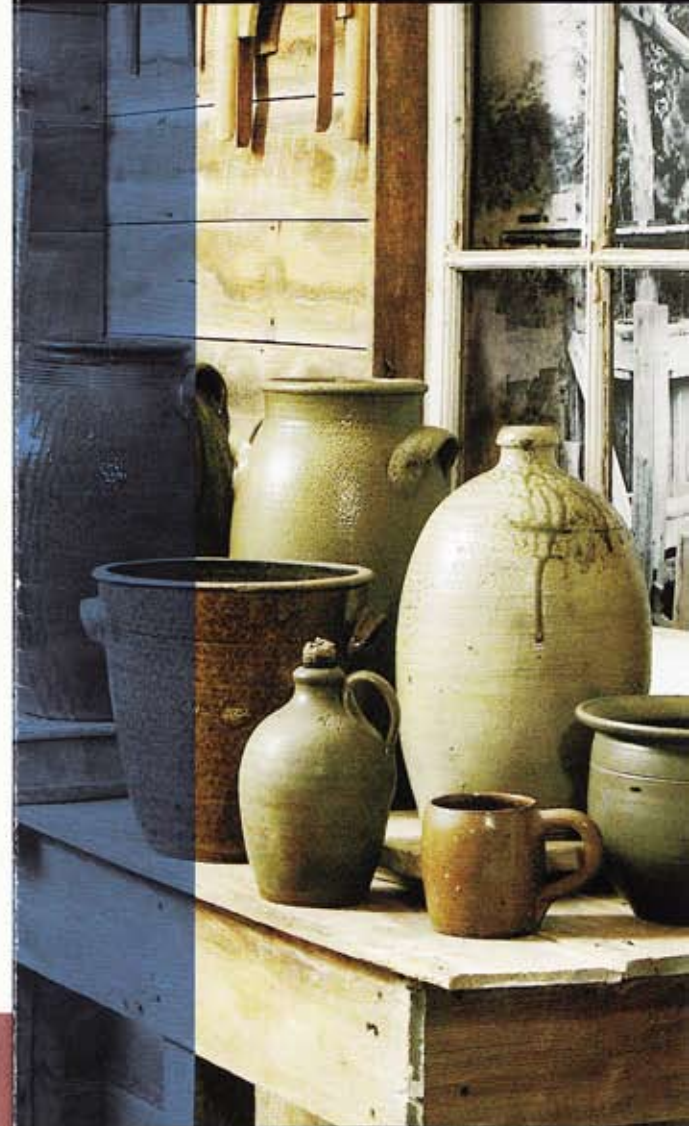
**FIRST1BANK**  
Your Community Bank

P.O. Box 328 · 121 W. Main Street  
Seagrove, NC 27341-0328

(336) 873-8040 · Fax (336) 873-8240

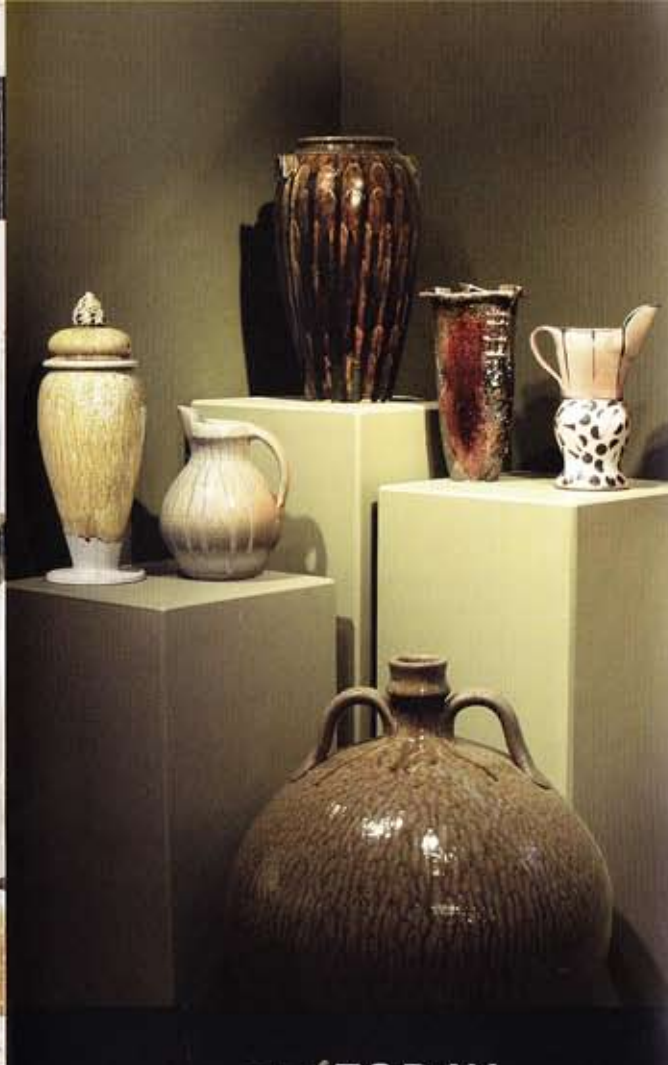
[www.firstbancorp.com](http://www.firstbancorp.com)

**FDIC**



SEAGROVE, NC

*The North Carolina Tradition:*  
**YESTERDAY...**



*...and* **TODAY**

**T**he Center's permanent exhibit of more than eight hundred pieces of pottery, artifacts, and photographs traces North Carolina's pottery history from prehistoric Native Americans to the present. The display interprets the impact of social, technological, and economic change on the state's most unique cultural resource.

*North Carolina*  
**POTTERY CENTER**

**T**he North Carolina Pottery Center showcases the remarkable history and ongoing tradition of pottery-making in North Carolina. Located in Seagrove, one of the state's key historical and contemporary pottery



Children's Pottery Class  
Stedman Education Building

producing regions, the Pottery Center is your first stop in exploring North Carolina's rich clay heritage. The state's pottery communities range from the mountains to the sea, and it is that wide-ranging diversity of styles, techniques, and history that the Center preserves and promotes.



The center's award winning design by Raleigh, NC architect Frank Harmon refers to the vernacular architecture of the surrounding country side: the barn, church, and potter's shed



*Promoting an Awareness of*  
**NORTH CAROLINA'S**  
**POTTERY HERITAGE THROUGH:**

**EXHIBITIONS:**

Permanent and changing exhibits of historical and contemporary work

**EDUCATION:**

Self-guided and guided tours, demonstrations and workshops

**OUTREACH:**

Museum, community, and public school partnerships and grant programs

**VISITOR SERVICES:**

Information on Seagrove area and state-wide pottery communities; maps, directions, and resources

**VISIT US AT:**

233 East Avenue, Seagrove, NC  
[www.ncpotterycenter.com](http://www.ncpotterycenter.com)