



North Carolina POTTERY CENTER

CONTACT INFORMATION:

Visit our website for the current exhibition, events schedule, and group tour information:

PO Box 531
Seagrove, NC 27341-0531
336-873-8430
Fax: 336-873-8530
www.ncpotterycenter.com
Email: ncpc@atomic.net

PUBLIC HOURS:

Tuesday - Saturday 10-4
Closed Major Holidays

ADMISSION:

Adults	\$2
Youth 13-18	\$1
Under 12	Free
Members	Free

OFFICE HOURS:

Monday - Friday 8:30-5

DIRECTIONS:

FROM CHARLOTTE (84 MILES)

Take either NC 49 or I-85 north to the intersection with US 64 (Asheboro, NC). Take US 64 east to the intersection with US 290. Take US 290 south about 11 miles, to exit 45 (Seagrove/NC 705). At the end of the exit ramp turn left and follow the brown highway signs to the center.

FROM RALEIGH (80 MILES)

Take US 64 west to the intersection with US 290. Take US 290 south about 11 miles, to exit 45 (Seagrove/NC 705). At the end of the exit ramp turn left and follow the brown highway signs to the center.

FROM WINSTON-SALEM, GREENSBORO (54, 37 MILES) Take I-40 to the intersection with US 290. Take US 290 south to exit 45 (Seagrove/NC 705). At the end of the exit ramp turn left and follow the brown highway signs to the center.

FROM SOUTHERN PINES (41 MILES)

Take NC 211 to the intersection of NC 705. Take NC 705 north 25 miles to Seagrove. Follow the brown highway signs to the center.



www.ncpotterycenter.com

Printing provided by:

FIRST BANK
Your Community Bank

P.O. Box 328 · 121 W. Main Street
Seagrove, NC 27341-0328

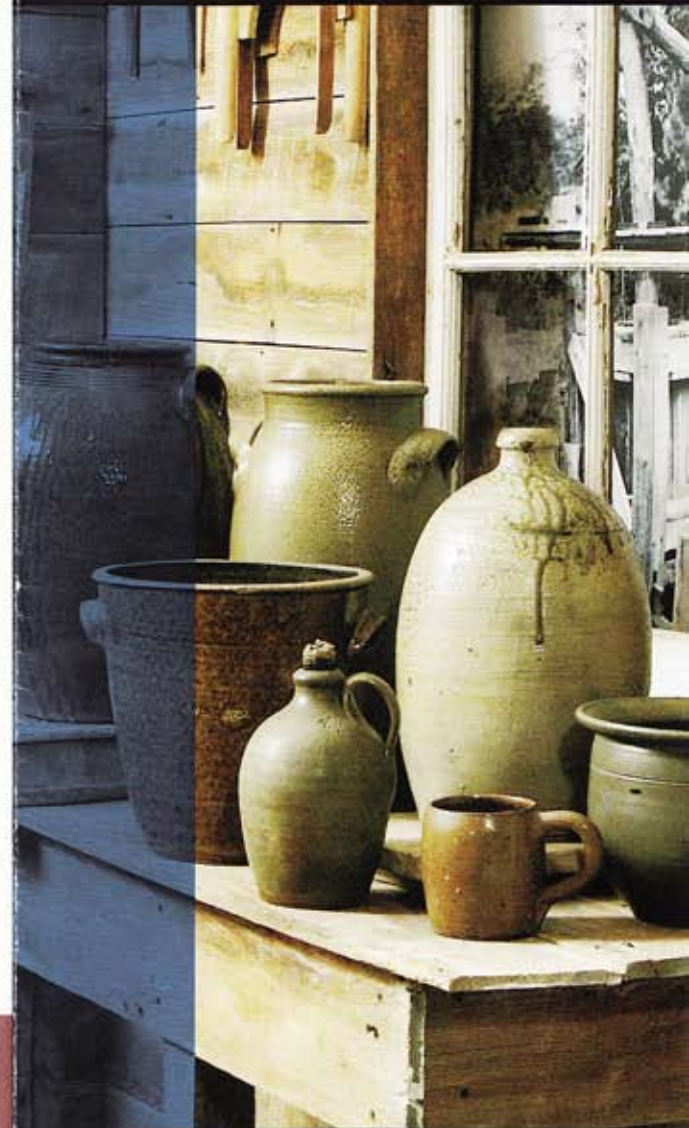
(336) 873-8040 · Fax (336) 873-8240

www.firstbancorp.com

FDIC

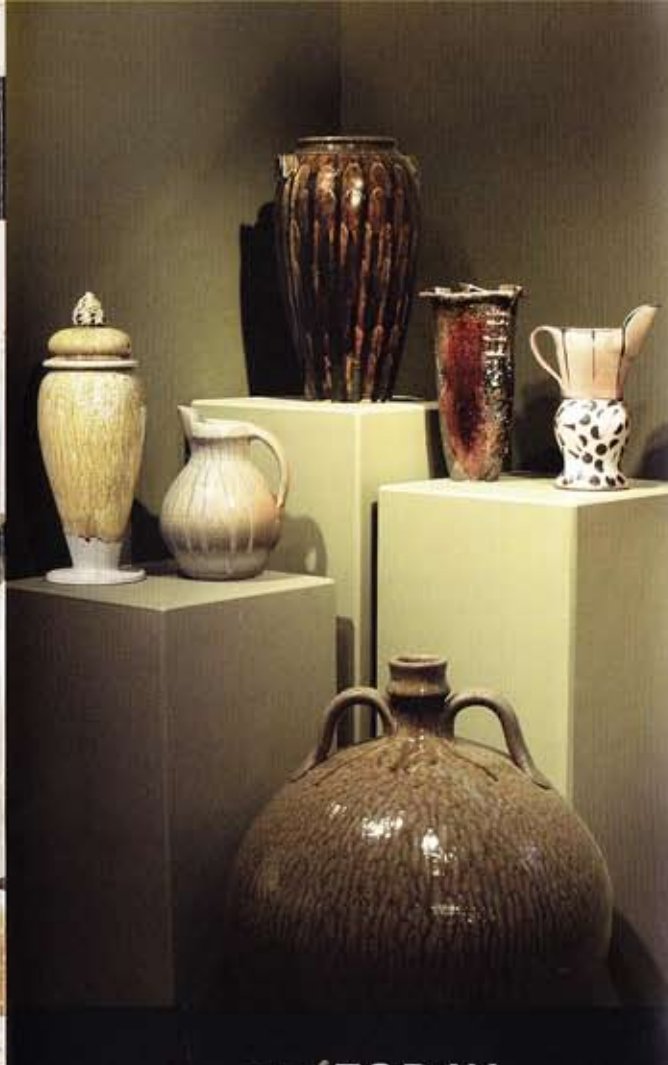


LENDER



SEAGROVE, NC

The North Carolina Tradition:
YESTERDAY...



...and **TODAY**

The Center's permanent exhibit of more than eight hundred pieces of pottery, artifacts, and photographs traces North Carolina's pottery history from prehistoric Native Americans to the present. The display interprets the impact of social, technological, and economic change on the state's most unique cultural resource.

North Carolina
POTTERY CENTER

The North Carolina Pottery Center showcases the remarkable history and ongoing tradition of pottery-making in North Carolina. Located in Seagrove, one of the state's key historical and contemporary pottery



Children's Pottery Class
Stedman Education Building

producing regions, the Pottery Center is your first stop in exploring North Carolina's rich clay heritage. The state's pottery communities range from the mountains to the sea, and it is that wide-ranging diversity of styles, techniques, and history that the Center preserves and promotes.



The center's award winning design by Raleigh, NC architect Frank Harmon refers to the vernacular architecture of the surrounding country side: the barn, church, and potter's shed



Promoting an Awareness of
NORTH CAROLINA'S
POTTERY HERITAGE THROUGH:

EXHIBITIONS:

Permanent and changing exhibits of historical and contemporary work

EDUCATION:

Self-guided and guided tours, demonstrations and workshops

OUTREACH:

Museum, community, and public school partnerships and grant programs

VISITOR SERVICES:

Information on Seagrove area and state-wide pottery communities; maps, directions, and resources

VISIT US AT:

233 East Avenue, Seagrove, NC
www.ncpotterycenter.com